

TU-PB

GATEWAY RS485 TO PROFIBUS-DP



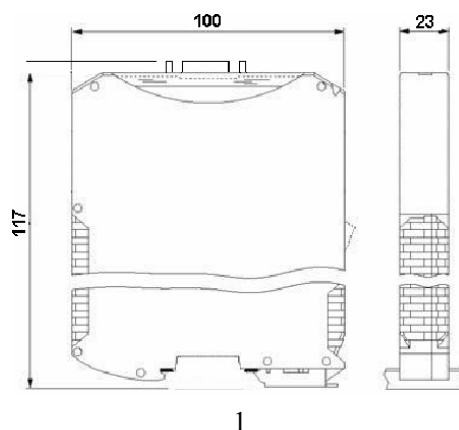
GENERAL DESCRIPTION

- Configurable data exchange
- PROFIBUS front connector
- Configurable communication RS485 or 232
- DIN Rail mounting
- Competitive price
- EMC and CE mark

TECHNICAL SPECIFICATION

Power Supply	24Vdc
Input / Output	standard RS232 / RS485 RS422
Field Bus	PROFIBUS-DP
Consumption	150mA
Panel Assembling	DIN Rail mounting
LED	Bus status, MODBUS Status , data exchange
PROFIBUS Connection	Front unit connector
RS485/422 Connection	Screw terminals
Power Supply Connection	Screw terminals
Operating Temperature	0÷55 °C
Storage Temperature	-40÷70°C

DIMENSIONS

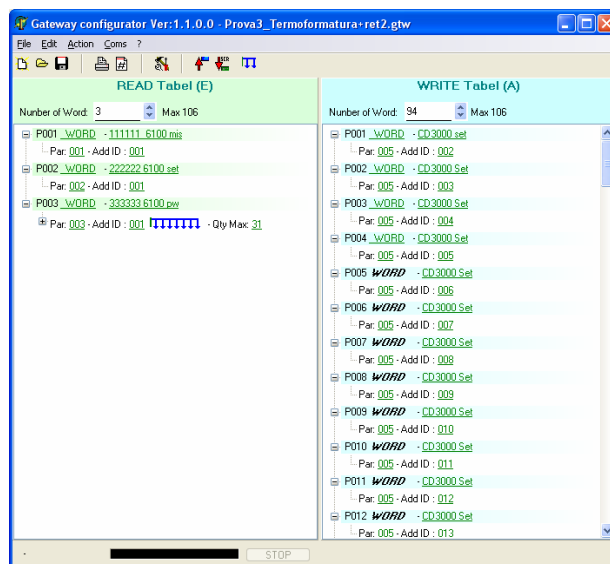


DATA EXCHANGE AND SOFTWARE TOOL

Data exchange structure can be customized with a software tools supplied with the TU-PB.

This tools permit :

- to configure how many word will be present in read or write area
- Link a variable on MODBUS side to a position in PROFIBUS table
- Retransmit a value read on an instrument to other instruments with-out PLC actions.
- Print a configuration
- Save a configuration on disk



ORDERING CODE

Order Code TU-PB