



Profiler HMI

Up to 30 Programmable control loop

OPERATOR PAGE - 1									
Description	ON-OFF	Set	Elapsed	Value	Power	Alarms	Deviation		
Z1		SP F RMP 1	0 STEP	00.00 0	36	-3.0			
Z2		SP F RMP 2	0 STEP	00.00 0	33	-3.0			
Z3		SP F RMP 3	0 STEP	00.00 0	35	-3.0			
Z4		SP F RMP 4	0 STEP	00.00 0	33	-3.0			
Z5		SP F RMP 5	0 STEP	00.00 0	38	-3.0			
Z6		SP F RMP 6	0 STEP	00.00 0	35	-3.0			
Z7		SP F RMP 7	0 STEP	00.00 0	39	-3.0			
Z8		SP F RMP 8	0 STEP	00.00 0	37	-3.0			

GENERAL DESCRIPTION

- Up to 30 zone can be managed
- 7.0 and 10" Colour HMI
- Trend display for each loop
- Recipe Program Management
- Fuji PUM Multiloop temperature controller.
- Each loop can manage one program of N°4 segment (Ramp SP1-Soak - Ramp to SP2- Soak)

Each project can manage up to 30 loops. The operator Page can show up to 8 loops. Pushing the zone description area is possible to see the advanced parameter and setting page for each zone.

- Zone Name Description
- ON/OFF Zone Push Button
- Setpoint display and setting
- Temperature measured displays
- Generic Alarm Status
- Deviation Graph
- Trend Display Push Button for each zone
- Power Output Value

ADVANCED OPERATING PAGE

Advance Zone: 1 Z1									
SETPOINT & VALUES			ALARMS & STATUS			SP Ramp Dwell			
Set	1	Value	36	AL1=Deviation	0	1	51	0.04	0.01
Heating %		28.4	AL2=Maximun	630		2	21	0.04	0.01
Cooling %		-3.0	TC: J(0+800)			Stop	RUN	HOLD	
TUNES PARAMETERS						Status:Start	Step:	1	
PB=Proportional Band		5.0	RC=Relative Cool Gain					1.0	
TI=Integral Time		240	OLAP=Overlap Heat/Cool					0.0	
TD=Derivate Time		60.0	0=Stop/End;1=Normal Type;2=Low PV					0	

CONTROL PARAMETERS

- Proportional Band
- Integral Time
- Derivative Time
- Cooling gain
- OLAP
- Pre Tune Activation
- Self Tune Activation

For each zone is available an advanced page where is possible to see and modify parameters and alarm.

The parameters with light blue colour can be setted on this page. This page can be displayed touching the zone name on the main operating page. With page button, is possible to shift to the next zone.

SETPOINT and MEASURE

- Setpoint and Measure
- % Heat and % Cool

ALARM STATUS

- Alarm 1 Deviation (default)
- Alarm 2 Max Temperature (default)
- Sensor Input Configuration

SINGLE PROGRAM PARAMETERS AND KEYS

- SP1—SP2 setting
- Ramp and Dwell setting
- Dedicated Run, Stop and Hold of the single Program.

RECIPE PAGE - PROGRAM OVERVIEW AND SETTING

Name: RECIPE1						
Description	Set1	H:M ramp	H:M Soak	Set2	H:M ramp	H:M Soak
Z1	51	0.04	0.01	21	0.04	0.01
Z2	52	0.04	0.01	22	0.04	0.01
Z3	53	0.04	0.01	23	0.04	0.01
Z4	54	0.04	0.01	24	0.04	0.01
Z5	55	0.15	0.02	25	0.05	0.03
Z6	56	0.16	0.02	26	0.02	0.02
Z7	57	0.17	0.02	27	0.02	0.02
Z8	58	0.18	0.02	28	0.02	0.02



Pag 1

Show Recipes



OK

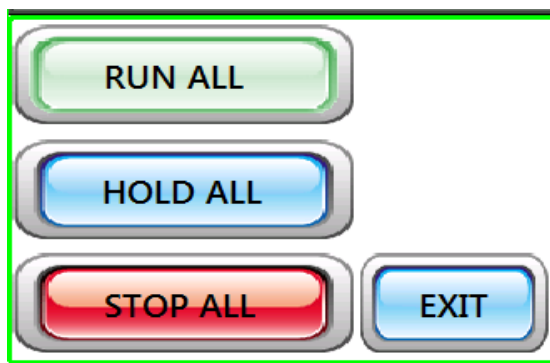
- Up to N°41 Recipes can be stored and named
- Each Recipe Include up to N°30 Program of 4 segment
- Each Program include (SP1, Ramp Time SP1 and Soak Time SP1, SP2, RAMP Time SP2 and Soak).
- All the program of one recipe can be setted from Recipe Page or setted from each one Advanced Page.
- Each Recipe Page display up to 8 zones. Pressing the arrow keys is possible to see all the program included in the recipe.

HARDWARE: FUJI PUM MULTI LOOP + REVO S + TU-RS485 ETH IO DL



- PUM A = N°4 Controller Heating Only
- PUM B= N°2 Controller Heating&Cooling
- PUM Output: SSR, Relay or 4:20mA
- Input Pt100/TC (200mS) or 4:20mA (100mS).
- TU-RS485-ETH-IO-DL: Ethernet, Data Logger, Logic Sequencer, IO, Web and Mail Server.
- Heater Break Alarm available with REVO S + HB Option.

PROGRAM FEATURE



OPERATOR POP UP

	SP	Ramp	Dweel
1	51	0.04	0.01
2	21	0.04	0.01
	Stop	RUN	HOLD
Status: Start		Step: 1	

Pushing the START button on the menù is possible to open an Operator Pop Up , where is possible to Run, Hold or Stop concurrently all the program stored for each loop.

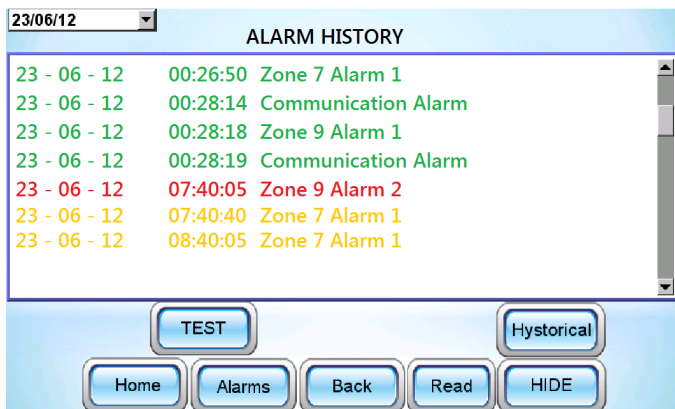
Pushing the Zone Name is possible to move to the Advanced Page. Inside this page is possible to:

- Set up one program with N°2 SP dedicated to the selected zone.
- Stop, Run or Hold only the selected program. The other program will remain in their status without to be influenced by the action done with the selected loop.

Note: all program are indipendent, as a standard the soak band auto hold function is disabled on PUM.

ADVANCED PAGE DETAILS Zone 1

ALARM PAGE AND ALARM HISTORY



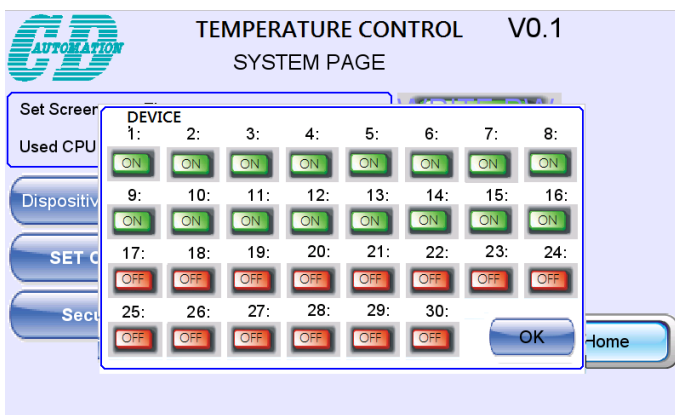
This page is available to collect all the loop's alarms. Inside this page is possible to see the type of Alarm, the Data and the time. There are three different colors:

- Green, alarm terminated
- Orange, alarm acknowledged
- Red, alarm active and not acknowledged



In case of alarm, the menu Alarm push button becomes Red.

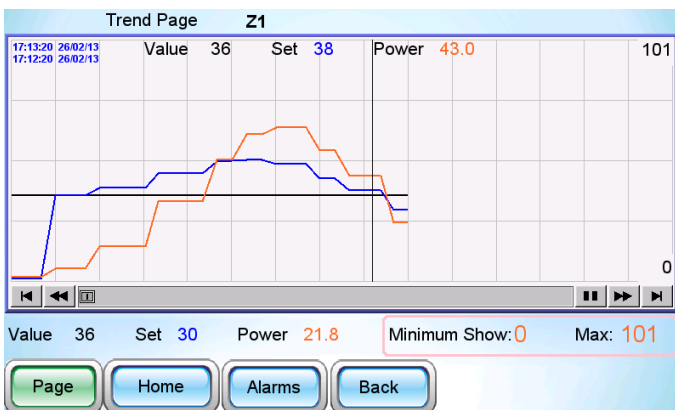
ADVANCED SETTING PAGE



Advanced Setting Page: It's very easy to add or remove one zone on the software. Each loop can be enabled or disabled by pressing a push button. For each zone is possible to set a dedicated name.

In this Page is also possible to set the language: English, Italian and German are available.

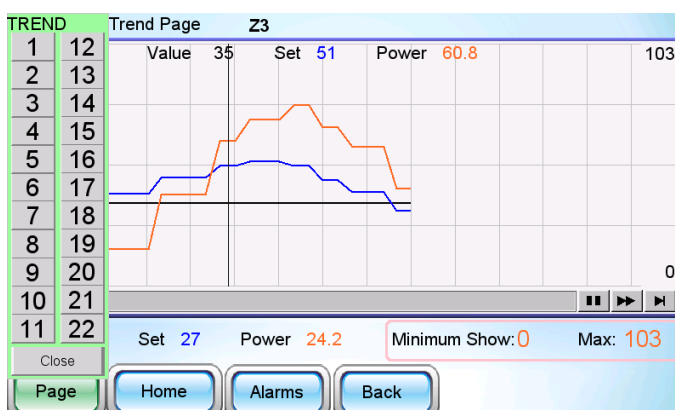
TREND PAGE



For each loop is available Trend page dedicated to the graphical display of setpoint value, temperature control and Power view over time.

Description of the fields:

- Set: View here the temperature set point adjustment.
- Value: Displays the value of temperature in the area.
- Power: Power percentage of the temperature zone.
- Minimum Show: It's an adjustable value, where the operator decides the minimum visible scale.
- View Maximum: It's an adjustable value, where the operator decides the maximum visible scale.



HMI Touch Panel from 7.0" up to 10" TFT Colour Display

7.0" TFT LCD 800x480

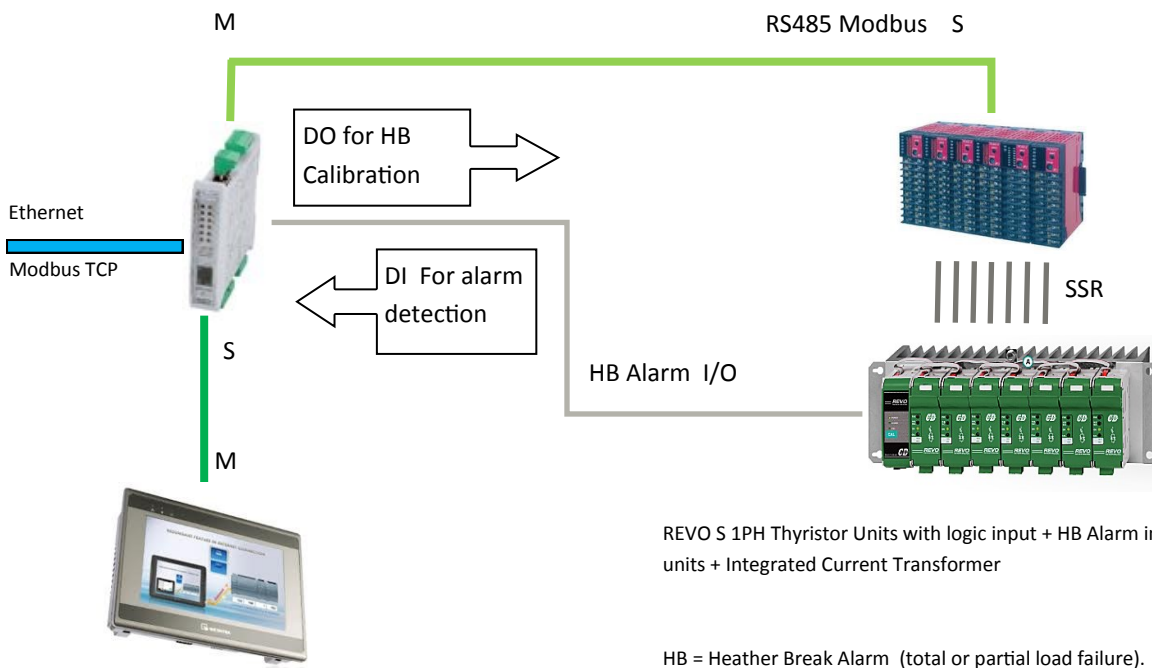


10.0" TFT LCD 800x480



ORDERING CODE	PHMI	-	07	-	P	-	008
SCREEN DIMENSION							
7,0"			07				
10,0"			10				
CONTROLLER TYPE & COMM.							
FUJI PUM Profiler + Ethernet TU-RS485-ETH					P		
VERSION							
Standard 8 loop per page view.							008
Other							XXX
LAB SETTING SERVICE							
Set the N° off zone (01 to 30) to get HMI and TC configured and tested based on your specification. Customer must give a complete detailed description of all the zones.	HMI	-	LAB	-	xx		
						01	
						up	
						to	
						30	

ETHERNET NODE — FUJI PUM MULTILOOP CONTROLLER



REVO S 1PH Thyristor Units with logic input + HB Alarm inside the units + Integrated Current Transformer

HB = Heater Break Alarm (total or partial load failure).

Sc = Short Circuit Alarm on SSR