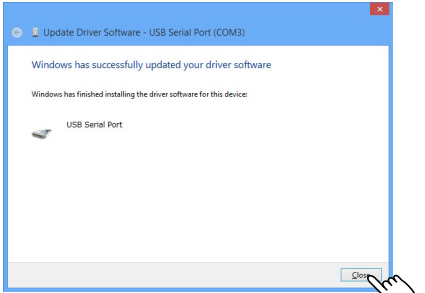
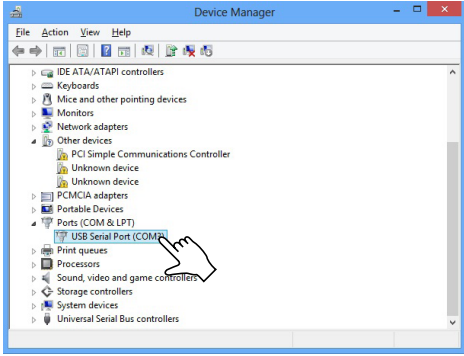


- 11) When the message "Windows has successfully updated your driver software" is displayed, click the "Close" button.

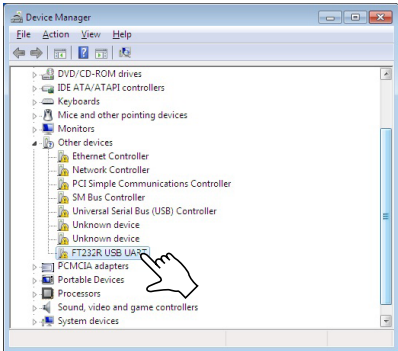


- 12) Check the port number of "USB Serial Port" under "Ports (COM & LPT)" in Device Manager.
The figure below shows an example that the port number is three (COM3).

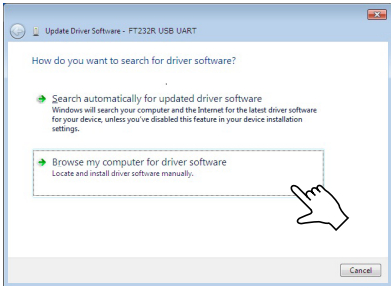


Using Windows 7

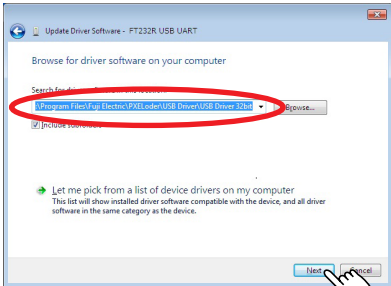
- 1) Insert the PC-side connector of the cable into the USB port of your PC.
2) Select Start - "Control Panel" - "System and Security" - "Device Manager".
3) Right-click "FT232R USB UART" and select "Update Driver Software".



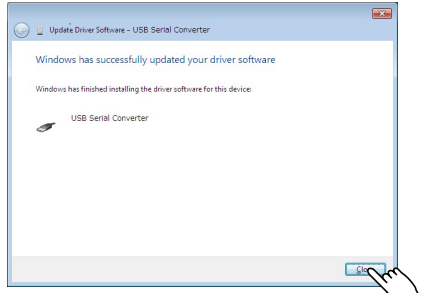
- 4) Click "Browse my computer for driver software".



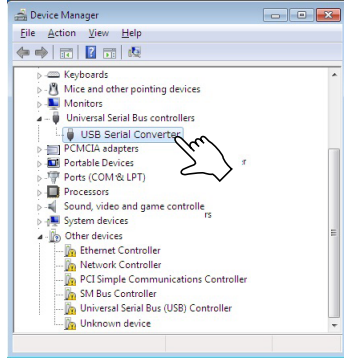
- 5) Click the "Browse" button and select the folder that the driver software is stored, and then click the "Next" button.



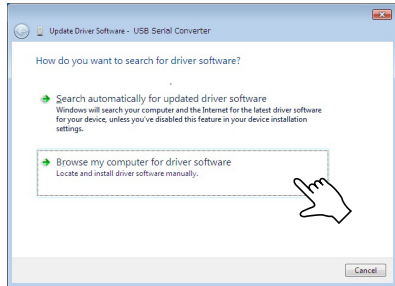
- 6) When the message "Windows has successfully updated your driver software" is displayed, click the "Close" button.



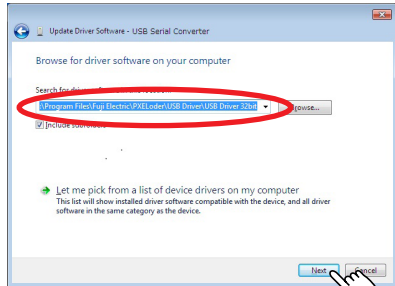
- 7) Open Device Manager again. Right-click "USB Serial Converter", and then click "Update Driver Software".



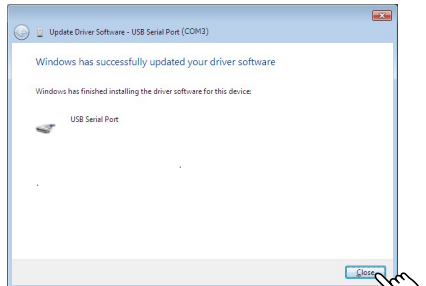
- 8) Click "Browse my computer for driver software".



- 9) Click the "Browse" button and select the folder that the driver software is stored, and then click the "Next" button.

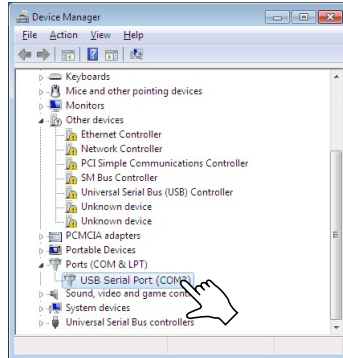


- 10) When the message "Windows has successfully updated your driver software" is displayed, click the "Close" button.



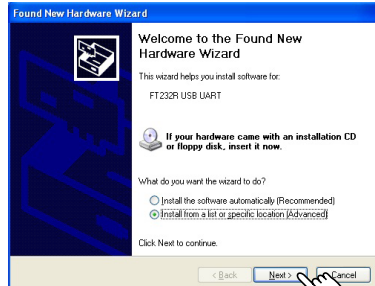
- 11) Check the port number of "USB Serial Port" under "Ports (COM & LPT)" in Device Manager.

The figure below shows an example that the port number is three (COM3).

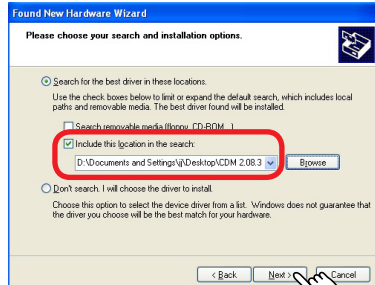


Using Windows XP

- 1) Insert the PC-side connector of the cable into the USB port of your PC.
2) "Found New Hardware Wizard" will start.
3) "Select Install from a list or specific location" and click the "Next" button.



- 4) Select "Search for the best driver in these locations" radio button and "Include this location in the search" checkbox, and then click the "Browse" button.
Select the folder that the driver software is stored, and click the "Next" button.



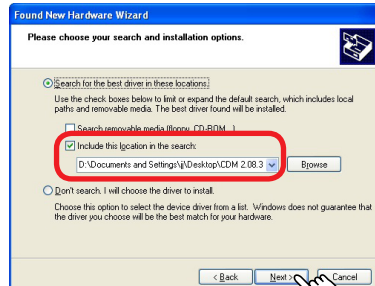
- 5) When the message "Completing the Found New Hardware Wizard" is displayed, click the "Finish" button.



- 6) "Found New Hardware Wizard" will restart.
"Select Install from a list or specific location" and click the "Next" button.



- 7) Select "Search for the best driver in these locations" radio button and "Include this location in the search" checkbox, and then click the "Browse" button.
Select the folder that the driver software is stored, and then click the "Next" button.

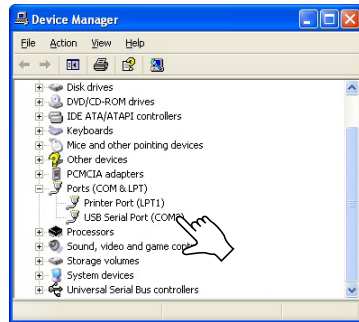


- 8) When the message "Completing the Found New Hardware Wizard" is displayed, click the "Finish" button.



- 9) Click "My Computer" - "View System Information" to see "System Properties". Then click the "Hardware" tab to access "Device Manager". Check the port number in "USB Serial Port" displayed under "Ports (COM & LPT)".

The figure below shows an example that the port number is three (COM3).



FE Fuji Electric Co., Ltd.

International Sales Div
Sales Group

Gate City Ohsaki, East Tower, 11-2, Osaki 1-chome,
Shinagawa-ku, Tokyo 141-0032, Japan
http://www.fujielectric.com
Phone: 81-3-5435-7280, 7281 Fax: 81-3-5435-7425
http://www.fujielectric.com/products/instruments/